

## LOCATION



The Educational Centre „Kloster Banz“ was founded in 1069 as a Benedictinean monastery. During the following centuries it was rebuilt and extended. By the nineteenth century it had become one of the biggest monasteries in Bavaria.

It is located in the northern part of Bavaria on a hill overlooking the small town „Bad Staffelstein“, close to Bamberg. It is easy to reach by public transportation.

### BY PLANE:

Travel to Frankfurt, Munich or Nuremberg International Airports. Continue to Lichtenfels by train or directly to Banz by rental car.

### BY TRAIN:

Travel to Lichtenfels via Nuremberg, Würzburg or Bamberg. Transportation between Lichtenfels Station and Banz Monastery will be provided.

### BY CAR:

You can take different Highways (A 70, A 73) via Bamberg to Banz. From the Highway A73 take exit „Bad Staffelstein-Nord“ and follow the signs to „Kloster Banz“.

See also the site map on the conference web-pages.

## CONTACT

Light-Harvesting Processes  
c/o W. Richter  
Experimental Physics IV  
University of Bayreuth  
D-95440 Bayreuth  
Germany

Phone +49-921-55-3230  
Secretary +49-921-55-4001  
Fax +49-921-55-4002  
E-Mail LHP@uni-bayreuth.de

## DEADLINES

Scientific contributions: Nov. 1, 2006  
Pre-registration: Dec. 1, 2006  
Conference abstract: January 30, 2007

## INTERNET

Contribution submission, on-line registration, technical program and additional information are available at

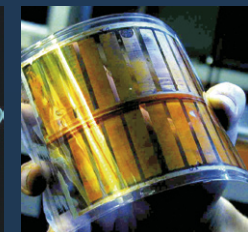
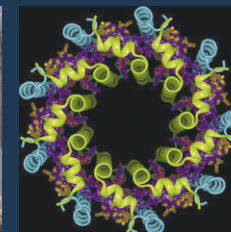
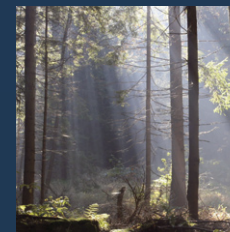
[www.LHP-bayreuth.de](http://www.LHP-bayreuth.de)

Please inform your colleagues and coworkers about this conference!

The organizers gratefully acknowledge financial support from the „Emil Warburg Stiftung“, the „DFG Sonderforschungsbereich 481“ and the „Bayreuther Institut für Makromolekülforschung“.



## An Interdisciplinary Conference on Novel Concepts of Light-Harvesting Phenomena and Related Topics



# Light-Harvesting Processes

March 21 – 24, 2007  
Banz Monastery, Germany

# INVITATION

The organizing committee cordially invites you to attend the interdisciplinary conference

## Light Harvesting Processes March 21 - 24, 2007.

Site of the conference is the Educational Centre in the historic monastery "Kloster Banz" (close to Bamberg). It is a beautiful historic location (with 900 years of history) overlooking the valley of the river Main.

Technological activities to convert solar energy to electrical energy have been mainly focussed on solar cells based on inorganic semiconductors which are typically manufactured in a classical top-down approach. Its natural counterpart photosynthesis, however, is based on the opposite strategy, i.e. bottom-up: Starting from individual molecules and combining them to supramolecular structures. Inspired by nature, multichromophoric assemblies based on organic molecular building blocks have attracted considerable attention during the last decade. Methods have been explored to build large supramolecular structures by spontaneous self-assembly of relatively small subunits.

Aim of the conference is to bring together scientists from different areas such as biology, chemistry, physics and technology, working in the field of light-harvesting processes and related subjects. The meeting will provide a platform for interdisciplinary communication and the exchange of concepts.

# SCIENTIFIC PROGRAM

## ORGANIZING AND PROGRAM COMMITTEE

Jürgen Köhler (Physics, Bayreuth)  
Georg Krausch (Physical Chemistry, Bayreuth)  
Stephan Kümmel (Physics, Bayreuth)  
Hans-Werner Schmidt (Macromolecular Chemistry, Bayreuth)  
Mukundan Thelakkat (Macromolecular Chemistry, Bayreuth)

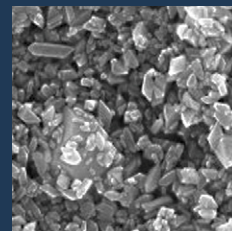
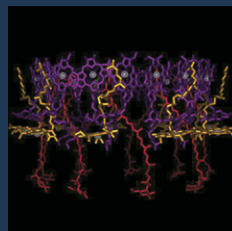
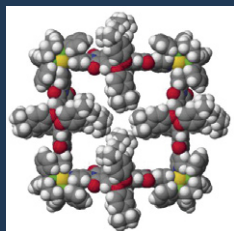
The scientific program will consist of invited lectures, contributed talks and posters.

## CONFIRMED INVITED SPEAKERS

Thomas Basché (Mainz, Germany)  
Richard Cogdell (Glasgow, U.K.)  
Frans De Schryver (Leuven, Belgium)  
Jochen Feldmann (Munich, Germany)  
Jasper Knoester (Groningen, Netherlands)  
Yoshiaki Kobuke (Ikoma, Japan)  
Serdar Sariciftci (Linz, Austria)  
Klaus Schulten (Urbana, USA)  
Frank Würthner (Würzburg, Germany)

For an update on the program please visit the conference web-pages.

[www.LHP-bayreuth.de](http://www.LHP-bayreuth.de)



# GENERAL INFORMATION

## REGISTRATION

Online registration will be available on the conference web-pages at

[www.LHP-bayreuth.de](http://www.LHP-bayreuth.de)

For additional information please send a note to

[LHP@uni-bayreuth.de](mailto:LHP@uni-bayreuth.de)

## ACCOMMODATION

All participants will be accommodated in the main building of the monastery "Kloster Banz" in modern single and double rooms. During the conference, full internet and FAX access is available.

## CONFERENCE FEE

The conference fee includes accommodation and 3-day full board (breakfast, lunch, dinner, without beverages), coffee (tea) during breaks and the abstract booklet. There will be a short conference excursion to the famous basilica "Vierzehnheiligen". Tickets for the excursion will be available at the registration office.

Payment	before Jan. 15	after Jan. 15
Regular fee		
single bedroom	460.– EUR	490.– EUR
double bedroom	440.– EUR	470.– EUR
Students' fee		
double bedroom	360.– EUR	390.– EUR

all prices per person

For cancellation before March 1, a service charge of 50 EUR will be deducted from the refund. No refunds can be made for cancellations received after March 1, 2007.